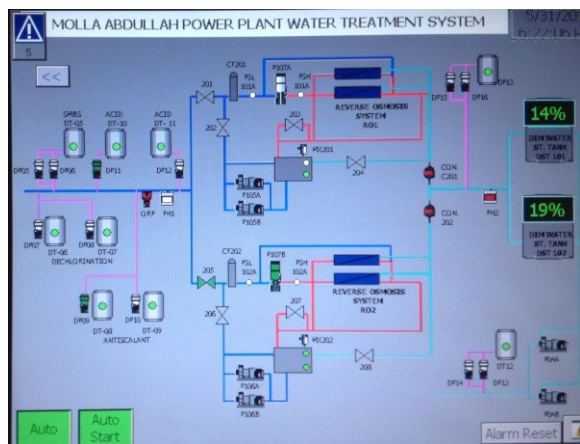


**Electrical Control Panel Descriptions**

We can supply, manufacture and install control panels, starting from the smallest water treatment system or pumping station up to redundant, drawable panels.

We can also manufacture soft starter control panels as tailor made projects.



**Main Power**

- Incoming Power
  - 480V 3 Phase through a Main Circuit Breaker
- Outgoing 480V Power
  - 480V 3 Phase 5.0 HP Fan through a Motor Starter
  - 480V 3 Phase 1.0 HP Pump through a Motor Starter

#### Control Power

- 120V and 24VDC
  - 480V-120V Transformer
  - 120V-24VDC Power Supply
- Outgoing 120V Power
  - Chemical Pump through a Power Relay

#### Remote Control Interface

- Digital (Dry Contact) Inputs
  - System Enable Contact
- Digital (Dry Contact) Outputs
  - System Local-Off-Remote Selector in Remote Contact
  - Fan Running Contact
  - Pump Running Contact
  - Chemical Tank Low Contact
- Analog (4-20mA) Outputs
  - pH signal from Door Mounted pH Meter (Signet)
  - ...

